

---

# Experiment involving PASITO, FEDERICA and OneLab

Víctor López, Jaime Garnica, Jose Luis Añamuro  
Víctor Moreno, Jorge López de Vergara, Javier Aracil

Ghent

15 December 2010

# Involved infrastructures

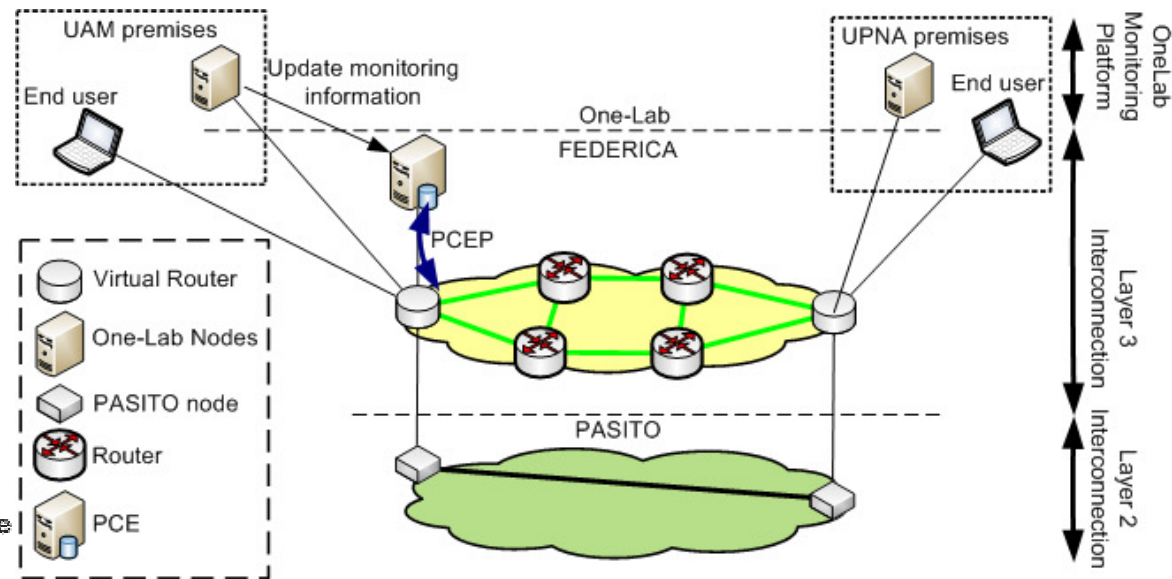
- This experiment uses three infrastructures:

- **PASITO**, a layer-2 network that connects main network research workgroups in Spain.
- **FEDERICA**, a network infrastructure that lets the creation of virtual networks on top of it.
- **OneLab**, an open federated laboratory, where researchers can have timeslots to do their experiments on real nodes connected to Internet.



# Experiments: Multi-layer Traffic Engineering and PCE

- MTE algorithms are defined in the recent years by the research community.
- The interconnection of OneLab-FEDERICA-PASITO provides a test-bed to evaluate such MTE algorithms.
- Path Computation Element Protocol (PCEP) is used to compute such routes.

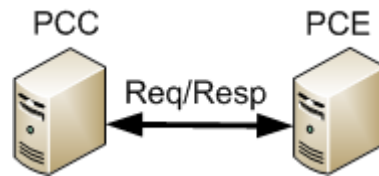


# FEDERICA User Experience

- 😊 Large scale test-bed
- 😊 Slice request process
- 😊 Infrastructure versatility
- 😊 Complex network topology scenarios
- 😞 Response time of the NOC.
- 😞 Reinstall original images.
- 😞 User privilege problems in the JunOS nodes.

# Current state of the experiment

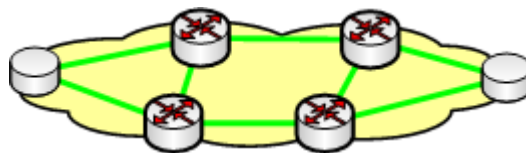
- Path Computation Element



- Nodes monitoring



- Federica Slice Configuration



# Expected outcomes

- It is expected that this experiment will let the following points:
  - Use of PASITO for fast interconnection to other infrastructures.
  - Combined use of FEDERICA, PASITO and OneLab.
  - Experimentation of PCE-enabled networks.
  - Experimentation of Multi-Layer Traffic Engineering.

Thanks  
Questions?

[victor.lopez@uam.es](mailto:victor.lopez@uam.es)

